

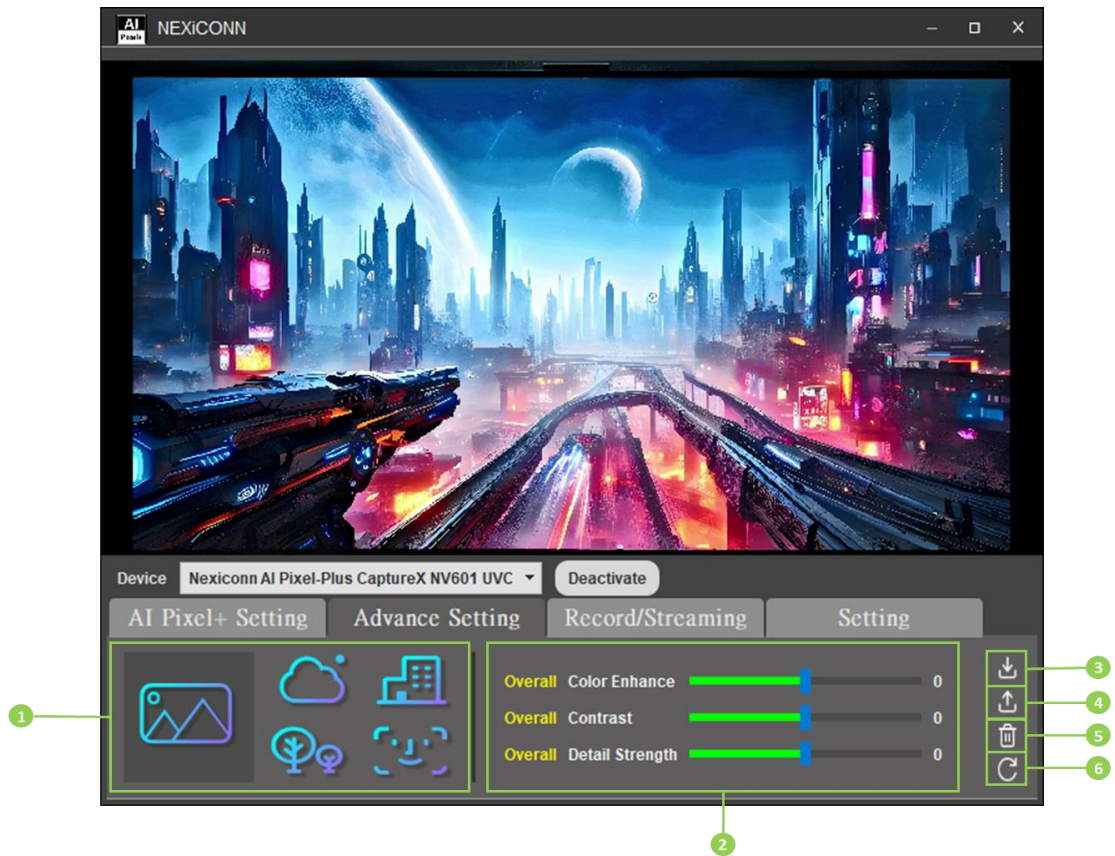
NV601/NV501 Setting



1	Preview window	3	Activate/deactivate device
2	Connected device select	4	UI controller

Instructions		
4	UI controller	<ul style="list-style-type: none"> Any operation in UI controller needs to sync with NV601/NV501 immediately, and vice versa. Video/Game mode are mutually exclusive <ul style="list-style-type: none"> Video mode selected & Game mode disabled Game mode selected & Video mode disabled Object configurations (Sky, Plant, Building & Face) were disabled when Video/Game mode is in "OFF" level.

Customized Picture Quality Setting



1	Object selection	4	Load button: Load saved picture quality setting
2	Customize picture quality in detail	5	Delete button: Delete saved picture quality setting
3	Save button: Save customized picture quality	6	Reset button: Reset to original setting

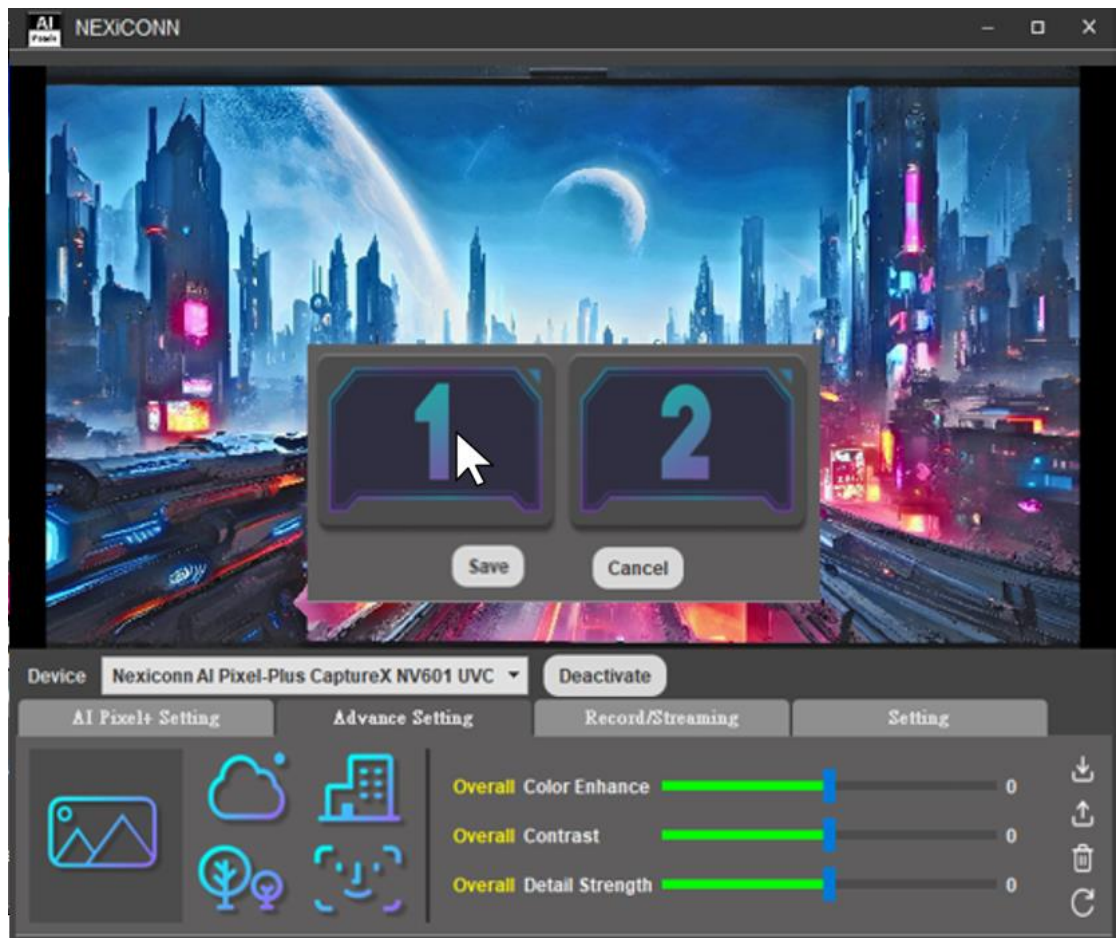
Instructions		
2	Customize picture quality in detail	<ul style="list-style-type: none"> Any change of customized picture quality needs to be sync with NV601/NV501 immediately.

Save Customized Picture Quality Setting

1. Click save button to save the customized picture quality setting



2. Choose the UI to save the customized picture quality setting



AI Pixel+ NEXiCONN



1 2

Save Cancel

Device Nexiconn AI Pixel-Plus CaptureX NV601 UVC Deactivate

AI Pixel+ Setting Advance Setting Record/Streaming Setting

Overall Color Enhance 0

Overall Contrast 0

Overall Detail Strength 0



3. Click "Save" button to confirm



4. The saved UI can be shown when switching between Video mode/Game mode/Customization mode



Load Customized Picture Quality Setting

1. Click load button to load the customized picture quality setting



2. Choose the UI to load the customized picture quality setting



AI Pixel+ NEXICONN



1 2

Load Cancel

Device Nexiconn AI Pixel-Plus CaptureX NV601 UVC Deactivate

AI Pixel+ Setting Advance Setting Record/Streaming Setting

Overall Color Enhance 0

Overall Contrast 0

Overall Detail Strength 0



3. Click "Load" button to confirm



Delete Customized Picture Quality Setting

1. Click delete button to delete the customized picture quality setting



2. Choose the UI to delete the customized picture quality setting





3. Click “Delete” button to confirm



Refresh Customized Picture Quality Setting

1. The screen below shows that if you want to refresh the customized picture quality setting (information of the red frame below)
Click refresh button to fresh the customized picture quality setting to original setting



2. The screen below shows that the information of the red frame(the customized picture quality setting)is back to original setting.

